



2018 FMA Annual Conference

Our Approach to Federal Financing has been the Same for any Administration

- Having a valid need

1986 Flood – The Wake-Up Call



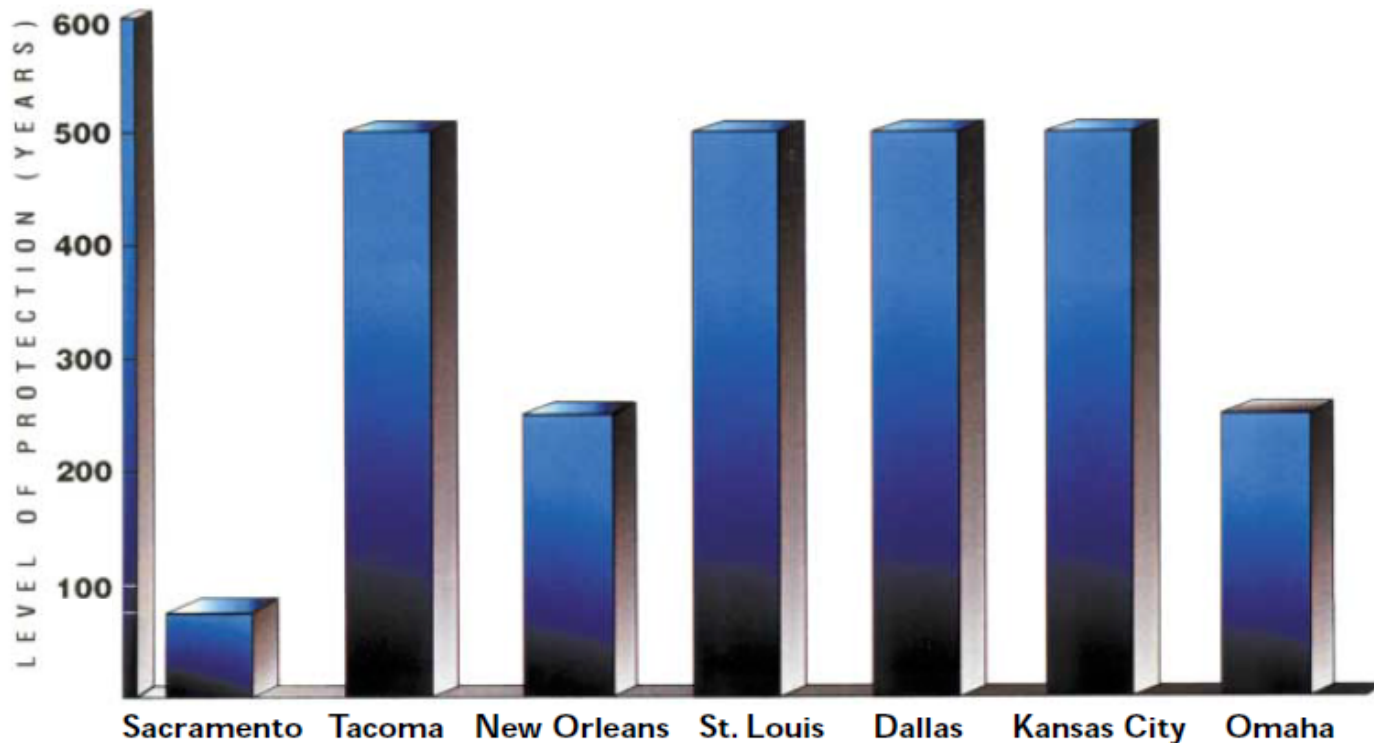
SAFCA

Sacramento most at-risk city in America for riverine flooding

- 3



Sacramento's Level of Flood Protection by Comparison to other River Cities



SAFCA

Consequences of Flooding in Sacramento

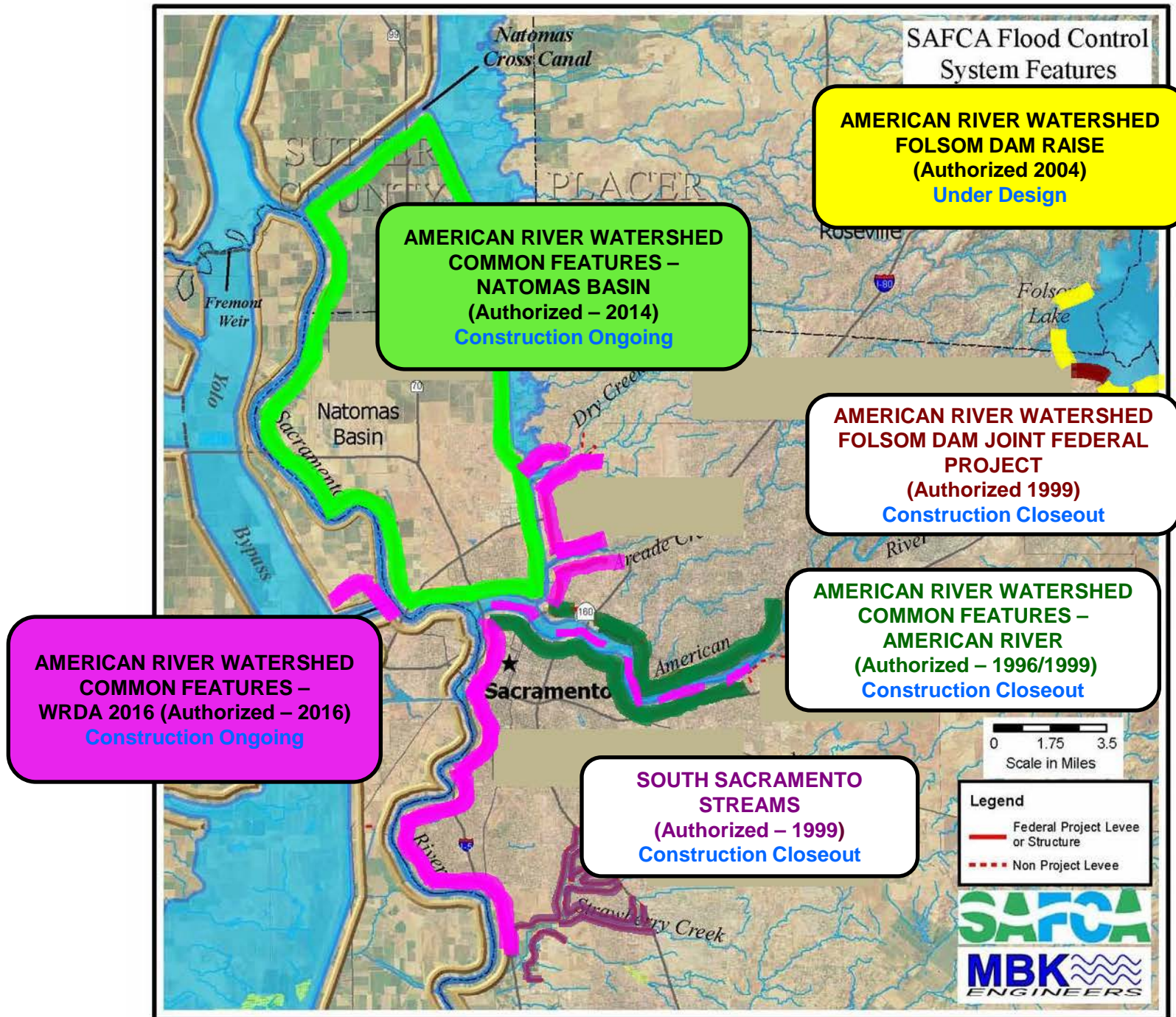
- Over half million people in the floodplain
- Deep flooding, cold water
 - Retain consciousness 1 – 3 hours
- Corps estimates 1,800 deaths
- Over 147,000 structures damaged
- About \$70 billion in damageable property

Having a plan



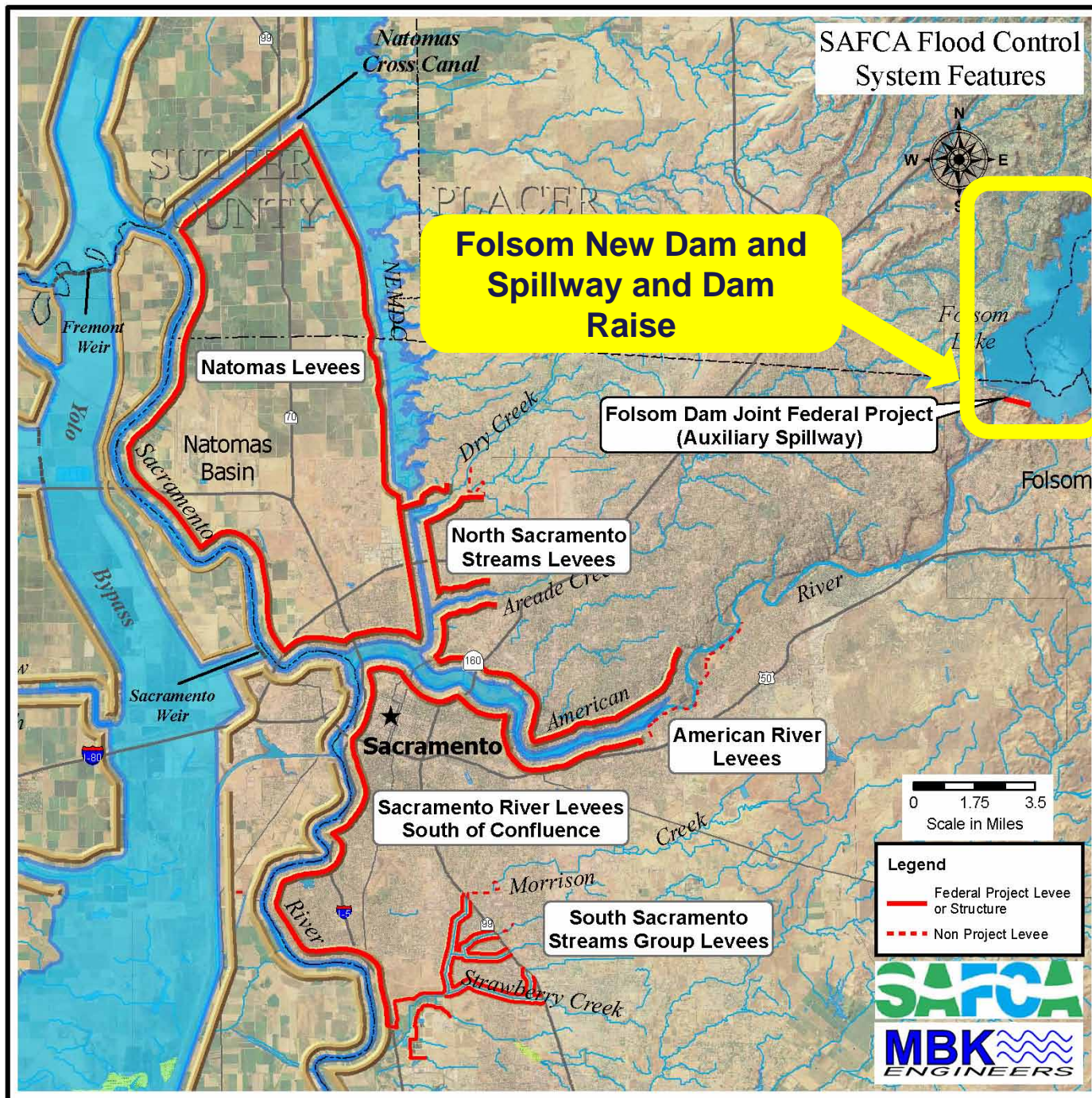
System

- Folsom Dam and Reservoir on American River
- 106 miles of levees and channels
- Sacramento Weir and Bypass
- Yolo Bypass



Ongoing Federal/State/SAFCA Projects

Project	Phase	Current Estimate
American River Watershed Common Features American River	Construction Close-out	\$320,000,000
American River Watershed Common Features Natomas Basin	Under Construction	\$1,200,000,000
American River Watershed Common Features WRDA 2016	Under Construction	\$1,590,000,000
American River Watershed Folsom Dam Modifications Joint Federal Project	Construction Close-out	\$850,000,000
American River Watershed Folsom Dam Raise	Under Design	\$325,000,000
South Sacramento Streams Group	Construction Close-out	\$110,000,000
TOTAL		\$4,395,000,000



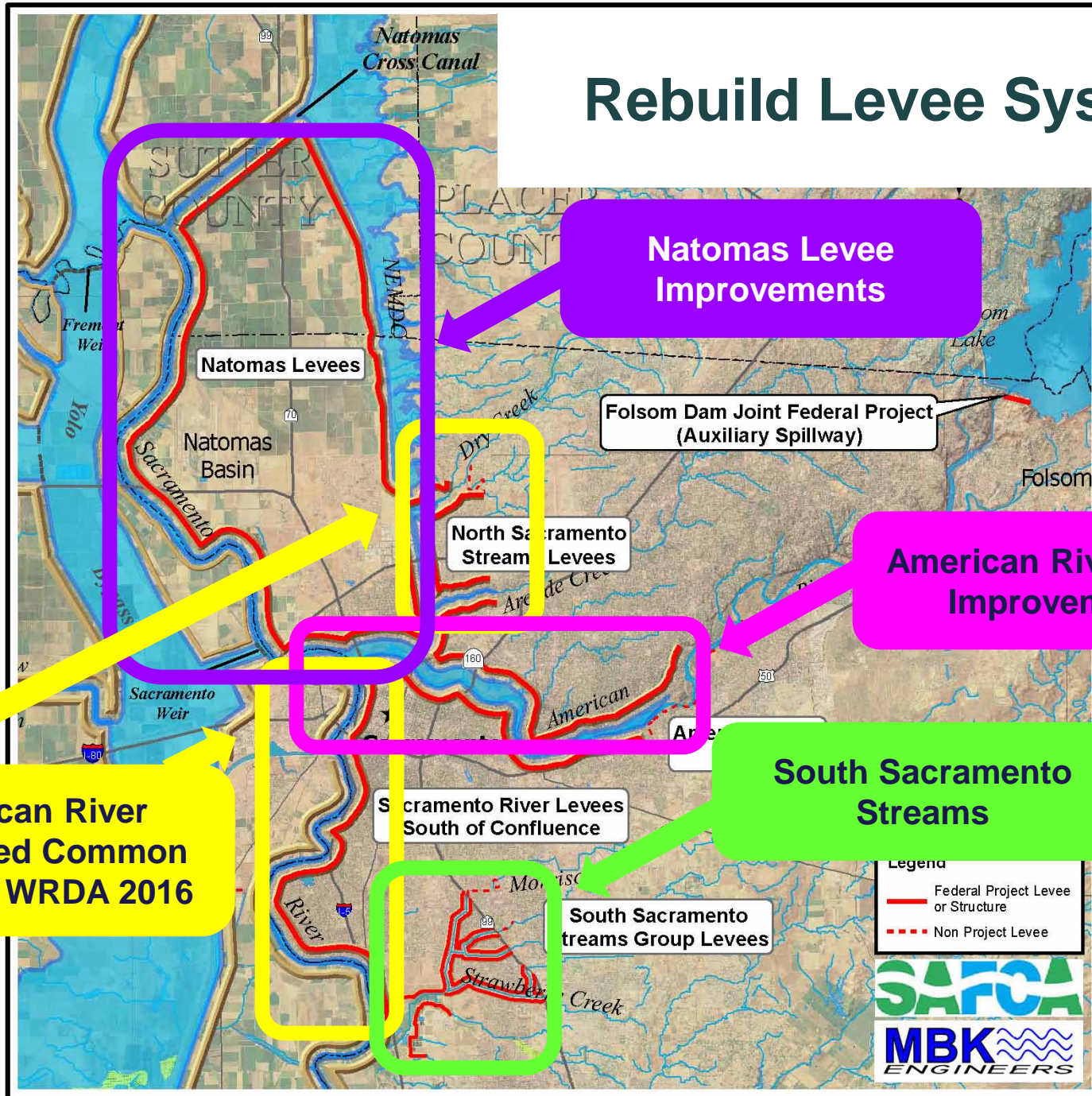
Rebuild Folsom Dam



New Dam and Spillway



Rebuild Levee System



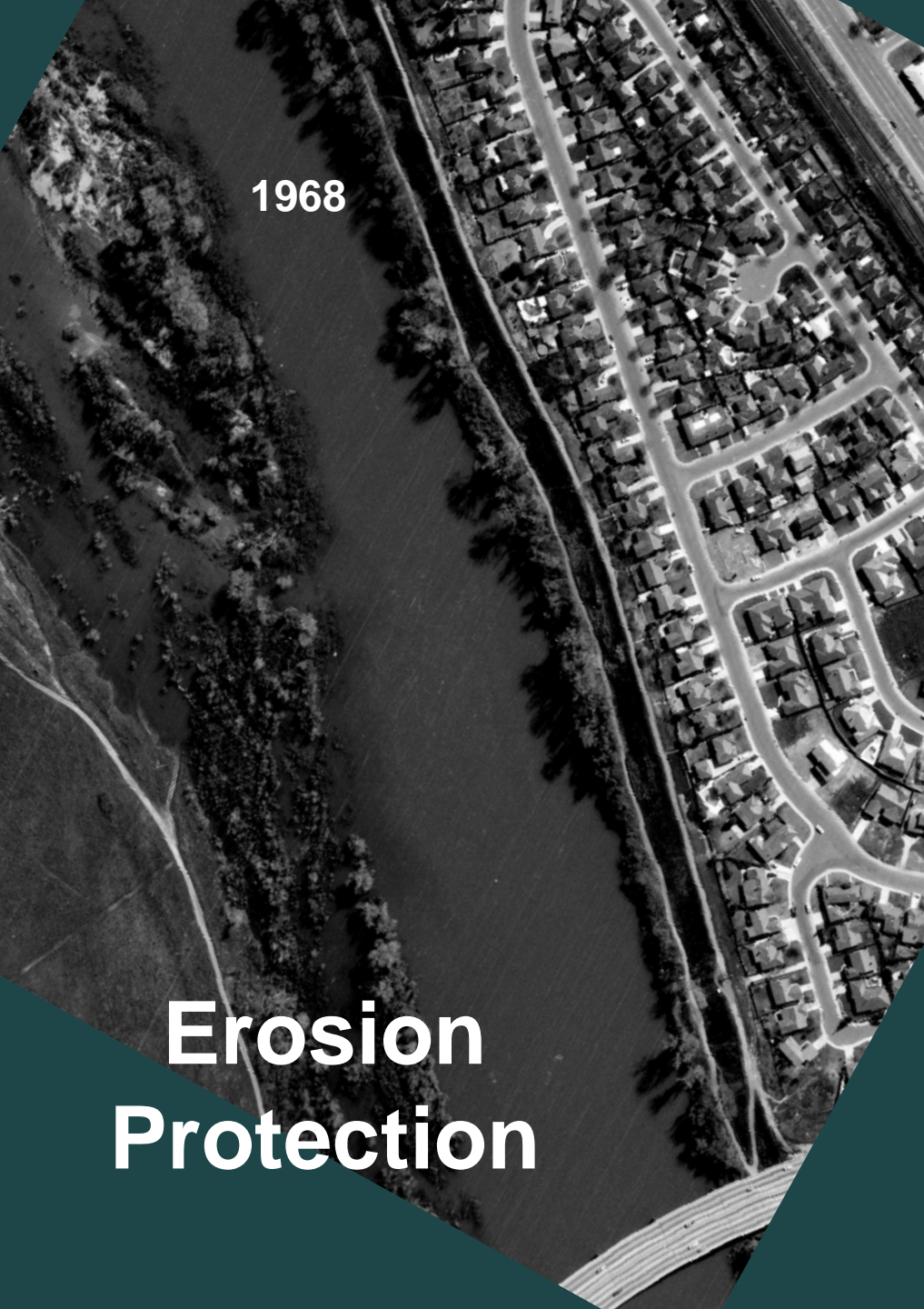
Address Levee Seepage and Stability

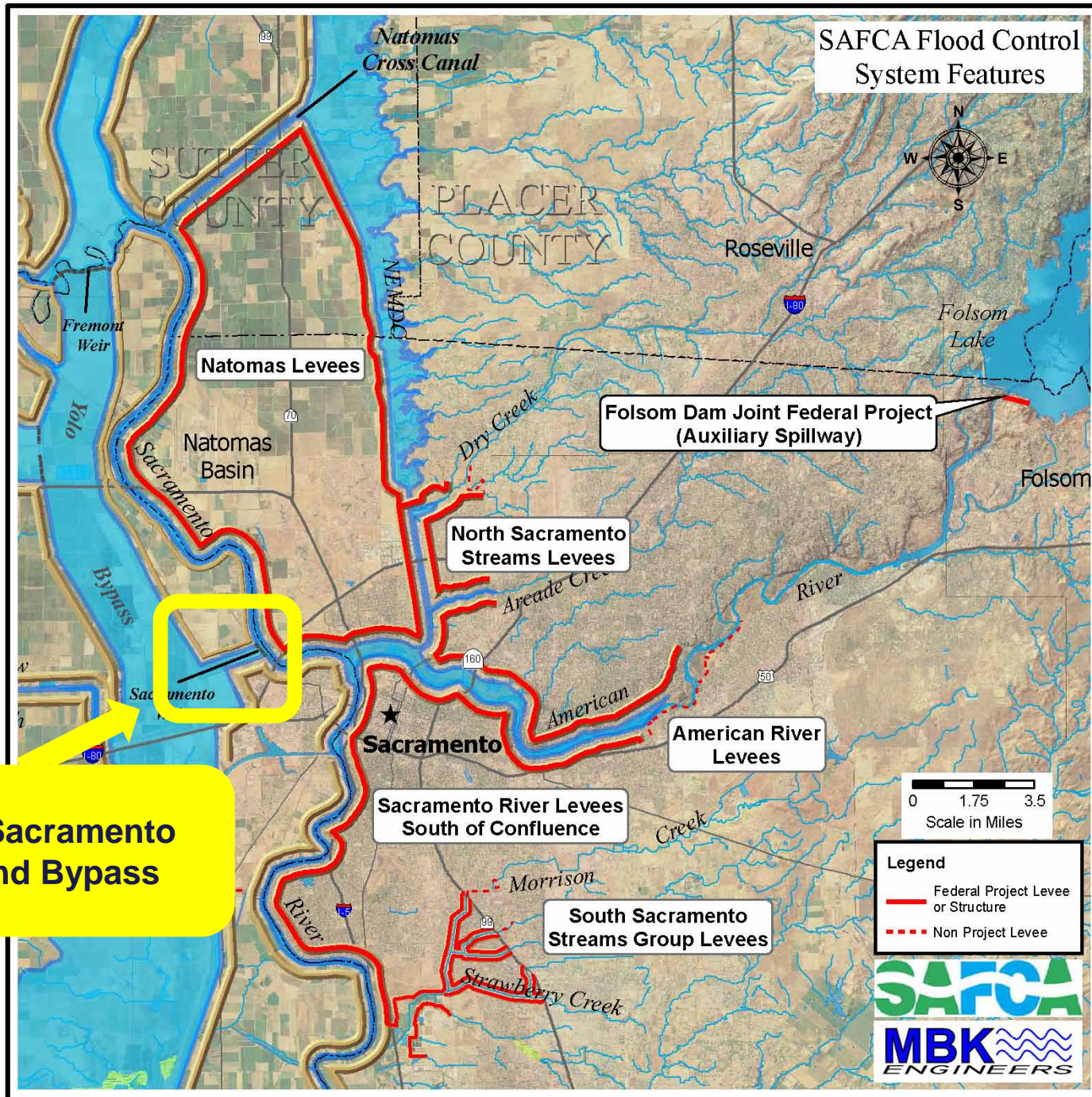


1968

**Erosion
Protection**

1986



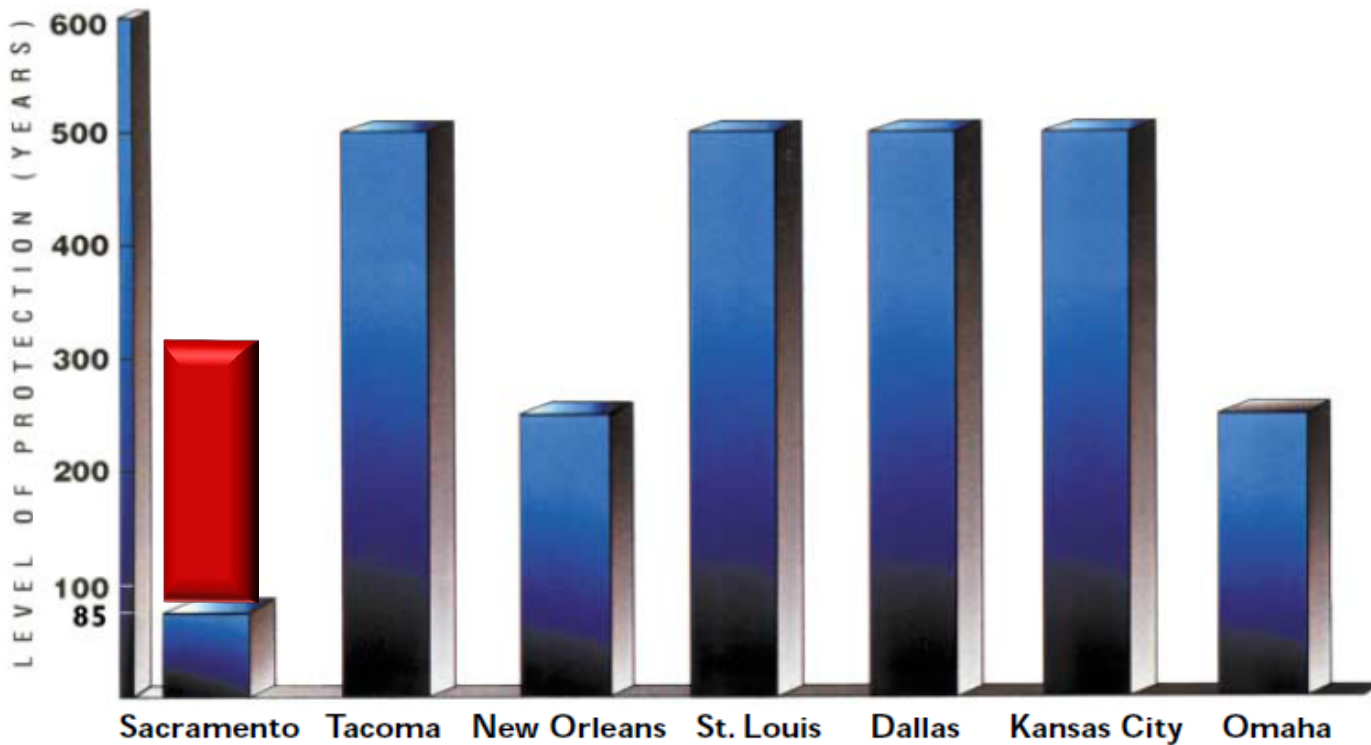


Widen Sacramento Weir and Bypass



After Currently Authorized Projects Completed

Sacramento's Level of Flood Protection by Comparison to other River Cities



Develop Partnerships

- Federal Government



- State Government

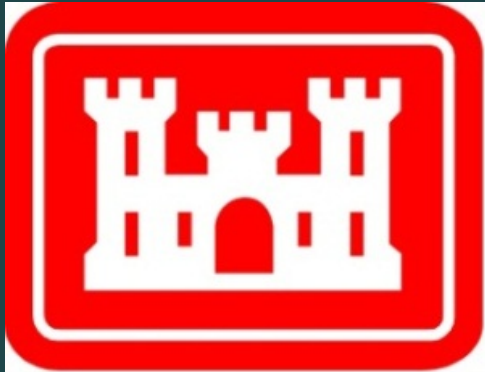


- Local Government





- Invest time and resources in developing long-term relationships
- Need a presence in Washington DC
- Marathon/not a sprint



**US Army Corps
of Engineers®**

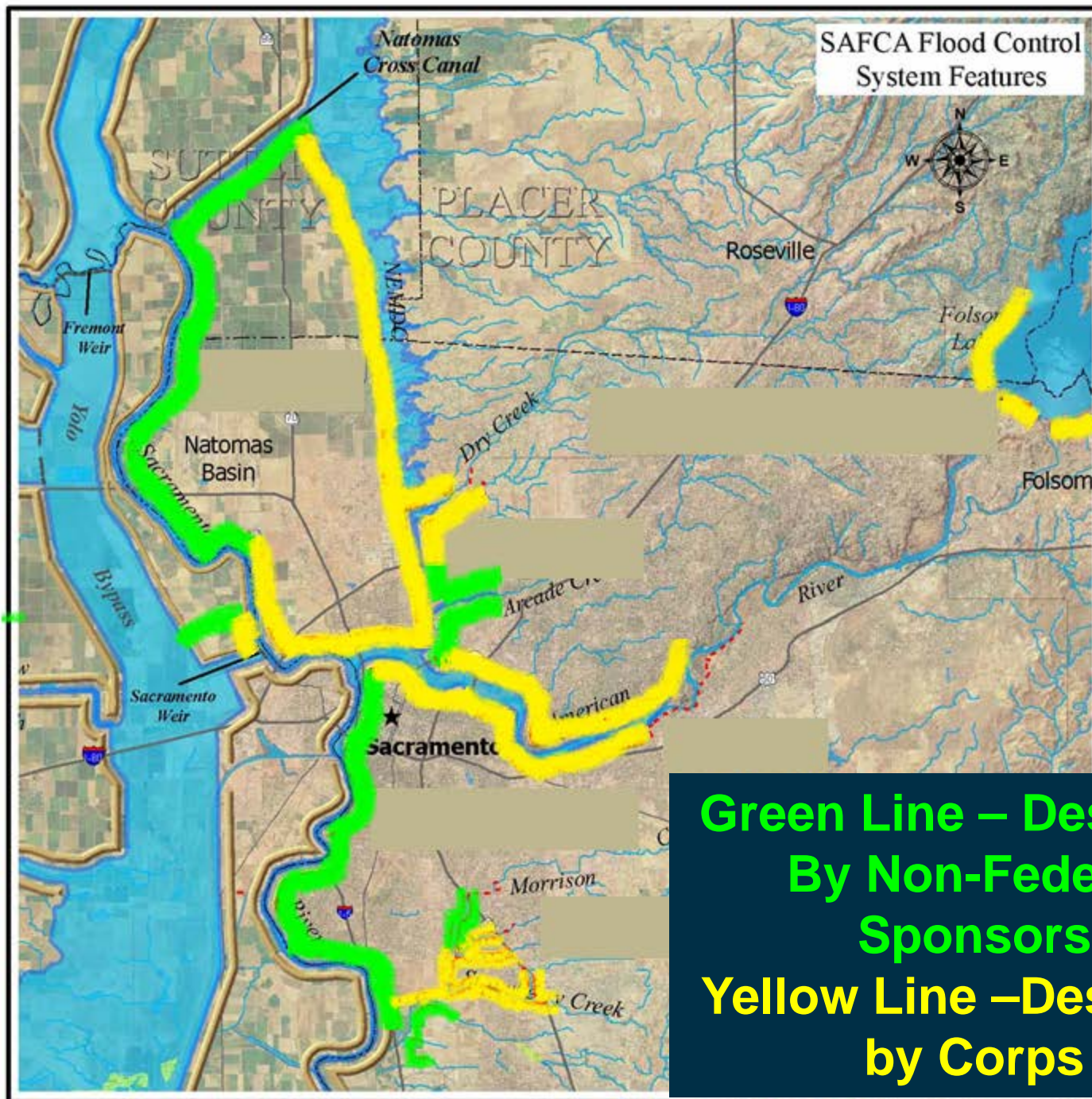
HEADQUARTERS

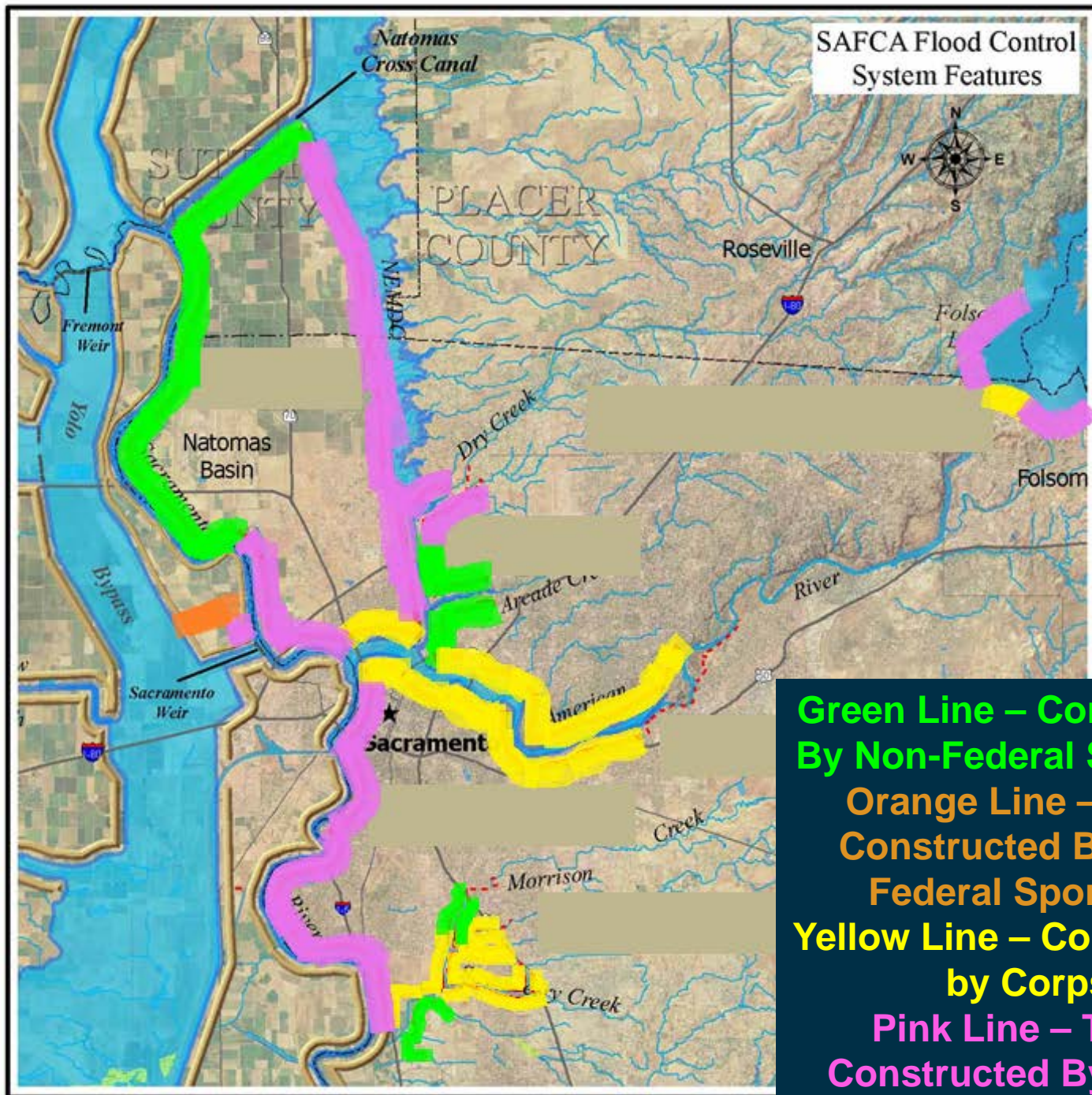
SOUTH PACIFIC DIVISION

SACRAMENTO DISTRICT

Keep Projects Ready

- **Extremely Important**
- **Keep Pushing Forward**
- **We don't succeed if our partners don't succeed.**
 - **Provide Resources**
 - **Perform Design Work**
 - **Perform Construction**





Summary SAFCA Approach

- **Have a valid need**
- **Have a plan**
- **Develop partnerships**
 - **Invest time and resources in developing long-term relationships**
 - **Need a presence in Washington DC**
 - **Marathon/not a sprint**

Summary SAFCA Approach

- **Keep projects ready**
 - **Extremely Important**
 - **Keep Pushing Forward**
 - **We don't succeed if our partners don't succeed.**
 - **Provide Resources**
 - **Perform Design Work**
 - **Perform Construction**

